

News 2018



light+building

18. – 23. 3. 2018 Frankfurt am Main

Visit us at our stand!

We look forward to seeing you.

Hall 8.0, Stand G30

haupa[®]

"System 4 - 70" cable stripper

Cable stripping knife system with automatic blade protection and interchangeable bracket for stripping any popular round cables. (Main body plus interchangeable bracket item no. 201044, 1 spare blade in the handle)

Scope

- Ø 4 - 70 mm cutting depth
- Inner blade: 35 mm
- Hook blade cutting depth: Level 1: 2.8 mm / Level 2: 3.4 mm / Level 3: 4.0 mm / Level 4: 4.6 mm
- Cable types: Round cable for flexible and fixed installation, moisture-proof cable



Art. no. 201040

Ø: 8 - 28 mm

360° | 201040



"Promo set" cable stripping system 4 - 70

Cable stripping knife system with automatic blade protection and interchangeable bracket for stripping any popular round cables.

Contents:

- 201040
- 201044
- 201046

Art. no. 201055

Ø: 8 - 28, 27 - 35 mm



Interchangeable bracket

Suitable for cable stripping system 4 - 70 (item no. 201040)



Art. no.	length	width	height	Ø
201042	108	28	33	4 - 16
201044	108	28	33	8 - 28
201046	133	15	49	27 - 35
201048	141	15	56	35 - 50
201050	156	15	69	50 - 70

Art. no. 201042_50

"Top Coax Plus" cable stripper

Use: For stripping all popular coaxial cables and tightening F connectors (HEX 11)

Scope: Ø 4.8 - 7.5mm F connectors (HEX 11)

Cable types: Standard coaxial cable, e.g. TV coax, RG58U/RG59U, RG6, PVC flex 3 x 0.75mm²

Art. no. 201058

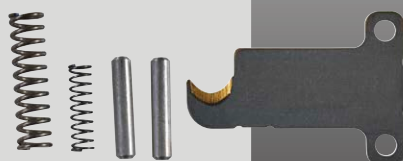
Ø: 4.8 - 7.5 mm

360° | 201058



Replacement hook blades

Suitable for cable stripping system 4 - 70 (item no. 201040)



Art. no. 201052

Set

Hex socket wrench for coax

Wrench size 11 for items 201058 and 200035



Art. no. 201059

WS: 11

"Pro set" cable stripping system 4 - 70

In shockproof plastic boxes, stackable, dimensions: (L 260mm, W 154mm, H 57mm) Set: 6-piece

Contents:

- 201040
- 201042
- 201044
- 201046
- 201048
- 201050



Art. no. 201054

Set: 6-pieces

360° | 201054



"XL" cable stripper

Use: For stripping round cables with a round cut, extra long for deep flush-mounted boxes

Scope: 8 - 13mm

Cable types: Round cable for flexible and fixed installation, moisture-proof cable

Material:

Casing Polyamide (PA),

Blade: Speciality steel, hardened, coated with titanium nitride

Art. no. 201045

Ø: 8 - 13 mm

360° | 201045



Video 201045



Smart Battery powered crimping tool universal "US-6M"

Sensor

Hydraulics for interchangeable pressing tools, crimping head can be rotated by 180°, with fast opening, manual return flow after perfect pressure.

- for 4 different interchangeable heads (item no. 216761, item no. 216762, item no. 216763, item no. 216764)
- Heads can be changed easily
- Can be locked using 2 extractable pins
- With the new HAUPA battery item no. 215523 and charger item no. 215527
- Pressing load kN: 60
- Working pressure in bar: 700

With the different colours of the sensor LED, it shows whether the pressing has been completed successfully or which errors have occurred:

- Light is green: Pressing completed as standard, motor stopped.
- Light is orange: Battery voltage not sufficient
- Light is red: Pressing interrupted before completed

The device also has 1 white LED designed to illuminate the working area.



Art. no. 216760-1

Main body



Cutting headstock "U-KS6-S50"

for copper and aluminium cable



Punching headstock "SK-KS-6"

360°

without inserts

Advantages:

- Head can be rotated by 360°
- Flexible aluminium head



Punching capacity:

Shaped holes 138 x 138 mm (ST37 2.5 mm)
Round holes 150 mm (ST37 3 mm) / 63 mm (VA 2 mm)



Crimping headstock "U-K0-6"

Pressing head for interchangeable pressing applications, with quick opening, without inserts.

- Head can be opened
- Opening / Hub: 17 mm
- Pressing width: slim
- Cable lugs: standard Cu 6-300 / DIN Cu 6-300 / DIN Al 16-240
- Connectors: standard Cu 6-300 / DIN Cu 6-300 / DIN Al 16-240
- Quick coupling



Art. no. 216761

for 216760-1



Adapter

For hydraulic pump item 216357 so the interchangeable heads for the Smart Universal can be used (items 216761, 216762, 216763, 216764)

- with quick-lock hydraulic connection (Cejn Series 115)



Art. no. 216765

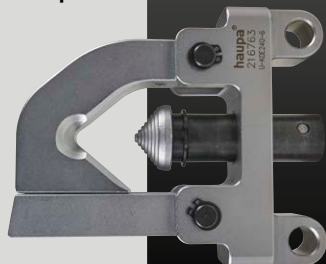
for 216357



Crimping headstock "U-KDE240-6"

Pressing head with quick opening, indent v-shape pressing, no inserts required.

- Head can be opened
- Cable lugs: standard Cu 16-240
- Connectors: standard Cu 16-240



Art. no. 216763

for 216760-1



Art. no. 216357

haupa®

... convincing solutions

Li-Ion battery 18 V, 2 Ah

Compatible with all Li-Ion 18 V battery devices

- Intelligent battery monitoring, temperature protection, LED capacity indicator
- Charging possible using the HAUPA compact charger item 215527 or original Makita charging technology
- Please note: This battery cannot be charged using the HAUPA quick charger item 215513.



Art. no. 215523
18 V, 2 Ah



Li-Ion battery 18 V, 4 Ah

Compatible with all Li-Ion 18 V battery devices

- Intelligent battery monitoring, temperature protection, LED capacity indicator
- Charging possible using the HAUPA compact charger item 215527 or original Makita charging technology
- Please note: This battery cannot be charged using the HAUPA quick charger item 215513.



Art. no. 215525
18 V, 4 Ah



Li-Ion 18 V compact charger

For models 215503, 215511, 215523, 215525

- Compact design • Low weight
- With LED charging indicator light
- Input voltage 100 - 240V AC
- Charging voltage 21V DC, charging current 1.5A
- Also suitable for Makita batteries BL1830, BL1815, BL1840

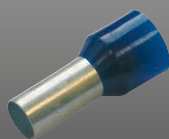


Art. no. 215527

End sleeves DIN colour range

- insulated
- Electrolytic copper, tin-plated
- Dimensions to DIN 46228. Part 4
- DIN colour range III

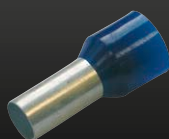
Art. no.	CSS	colour	TL	PU
272803	0,75	gray	10	100
272804	1	red	10	100
272812	2,5	blue	10	100



End sleeves, colour range II, (german)

- insulated
- Electrolytic copper, tin-plated
- Colour range II, german

Art. no.	CSS	colour	TL	PU
272721	0,75	white	10	100
272723	1	yellow	10	100
272725	1,5	red	10	100



PVC-insulated

PVC

Ring terminals

- of electrolytic copper, tin-plated, soldered
- **PVC-insulated**, with expanded insulating sleeve
- suitable for harmonised cables
- Easy Entry

PVC
105°/600V



Art. no.	CSS	colour	M	B	PU
260243	0,1 - 0,4	yellow	2	5	100
260245	0,1 - 0,4	yellow	3	5	100
260246	0,1 - 0,4	yellow	3,5	6	100
260247	0,1 - 0,4	yellow	4	6,5	100
260248	0,1 - 0,4	yellow	5	8	100

PC-insulated

PC

Ring terminals DIN 46237

- of electrolytic copper, tin-plated, soldered
- **PC-insulated**, with expanded insulating sleeve
- suitable for harmonised cables
- Easy Entry

PC
125°/600V



Art. no.	CSS	colour	M	PU
340256	0,5 - 1,0	red	4	100
340258	0,5 - 1,0	red	5	100
340270	1,5 - 2,5	blue	4	100
340272	1,5 - 2,5	blue	5	100
340274	1,5 - 2,5	blue	6	100
340288	4,0 - 6,0	yellow	6	100
340290	4,0 - 6,0	yellow	8	100

Fork terminals DIN 46237

- of electrolytic copper, tin-plated, **not soldered**
- **PC-insulated**, with expanded insulating sleeve
- suitable for harmonised cables
- Easy Entry

PC
125°/600V



Art. no.	CSS	colour	M	PU
340304	0,5 - 1,0	red	4	100
340314	1,5 - 2,5	blue	4	100
340322	4,0 - 6,0	yellow	6	100

Butt connectors

- of electrolytic copper, tin-plated
- **PC-insulated**, with expanded insulating sleeve,
- suitable for harmonised cables
- Easy Entry



Art. no.	CSS	colour	PU	
340350	0,5 – 1,0	red	100	
340352	1,5 – 2,5	blue	100	
340354	4,0 – 6,0	yellow	100	

PC
-125°/300V

Socket sleeves (female)

- Brass, tin-plated
- **PC-insulated**
- with vibration-free copper sleeve
- Easy Entry



Art. no.	CSS	colour	plug	PU	
340392	0,5 – 1,0	red	6,3 x 0,8	100	
340394	1,5 – 2,5	blue	6,3 x 0,8	100	
340396	4,0 – 6,0	yellow	6,3 x 0,8	100	

PC
-125°/300V

Socket sleeves (female), fully-insulated

- Brass, tin-plated
- **PC-insulated**
- with vibration-free copper sleeve
- Easy Entry



Art. no.	CSS	colour	plug	PU	
340414	0,5 – 1,0	red	6,3 x 0,8	100	
340416	1,5 – 2,5	blue	6,3 x 0,8	100	

PC
-125°/300V

Flat terminals

- Brass, tin-plated
- **PC-insulated**
- with vibration-free copper sleeve
- Easy Entry



Art. no.	CSS	colour	plug	PU	
340422	0,5 – 1,0	red	6,3 x 0,8	100	
340424	1,5 – 2,5	blue	6,3 x 0,8	100	
340426	4,0 – 6,0	yellow	6,3 x 0,8	100	

PC
-125°/300V

ECO-Line

ECO-Line

Ring terminals „ECO-Line“

- of electrolytic copper, tin-plated, **not soldered**
- **PVC-insulated**, with expanded insulating sleeve
- suitable for harmonised cables



Art. no.	CSS	colour	M	PU	
370256	0,5 – 1,0	red	4	100	
370258	0,5 – 1,0	red	5	100	
370270	1,5 – 2,5	blue	4	100	
370272	1,5 – 2,5	blue	5	100	
370274	1,5 – 2,5	blue	6	100	
370288	4,0 – 6,0	yellow	6	100	
370290	4,0 – 6,0	yellow	8	100	

PVC
ECO-Line
-105°/600V

Fork terminals „ECO-Line“

- of electrolytic copper, tin-plated, **not soldered**
- **PVC-insulated**, with expanded insulating sleeve
- suitable for harmonised cables



Art. no.	CSS	colour	M	PU	
370304	0,5 – 1,0	red	4	100	
370314	1,5 – 2,5	blue	4	100	
370322	4,0 – 6,0	yellow	6	100	

PVC
ECO-Line
-105°/600V

Butt connectors „ECO-Line“

- of electrolytic copper, tin-plated
- **PVC-insulated**, with expanded insulating sleeve,
- suitable for harmonised cables



Art. no.	CSS	colour	PU	
370350	0,5 – 1,0	red	100	
370352	1,5 – 2,5	blue	100	
370354	4,0 – 6,0	yellow	100	

PVC
ECO-Line
-75°/300V

haupa

... convincing solutions

Socket sleeves (female) „ECO-Line“

- Brass, tin-plated
- **PVC-insulated**
- with vibration-free copper sleeve



PVC
ECO-Line
75°/300V

Art. no.	CSS	colour	plug	PU
370392	0,5 – 1,0	red	6,3 x 0,8	100
370394	1,5 – 2,5	blue	6,3 x 0,8	100
370396	4,0 – 6,0	yellow	6,3 x 0,8	100

Socket sleeves (female), fully-insulated „ECO-Line“

- Brass, tin-plated
- **PVC-insulated**
- with vibration-free copper sleeve



PVC
ECO-Line
75°/300V

Art. no.	CSS	colour	plug	PU
370414	0,5 – 1,0	red	6,3 x 0,8	100
370416	1,5 – 2,5	blue	6,3 x 0,8	100

Flat terminals „ECO-Line“

- Brass, tin-plated
- **PVC-insulated**
- with vibration-free copper sleeve

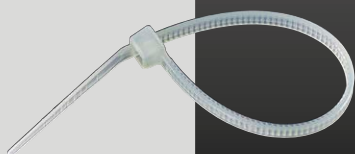


PVC
ECO-Line
75°/300V

Art. no.	CSS	colour	plug	PU
370422	0,5 – 1,0	red	6,3 x 0,8	100
370424	1,5 – 2,5	blue	6,3 x 0,8	100
370426	4,0 – 6,0	yellow	6,3 x 0,8	100

Heat-resistant cable ties

Material nylon 6/6, colour light green, UL94V-2, for high temperature applications between -40°C and +105°C



Art. no.	length	width	PU
263000	100	2,5	100
263004	200	2,5	100
263006	120	3,6	100
263008	160	4,6	100
263010	199	4,6	100
263012	370	7,5	100

“UV” heat-resistant cable ties, black

Material nylon 6/6, colour black, UL94V-2, for high temperature applications between -40°C and +145°C, UV-stabilized



Art. no.	length	width	PU
263020	100	2,5	100
263022	161	2,5	100
263024	200	2,5	100
263026	199	4,6	100
263028	302	4,6	100
263030	370	7,5	100

Flame retardant cable ties

Material nylon 6/6, colour ivory, UL94V-0, for use in temperatures between -40°C and +85°C



Art. no.	length	width	PU
263050	80	2,5	100
263056	140	3,6	100
263064	385	4,6	100
263058	160	4,8	100
263066	290	7,6	100

HUPImpact cable ties

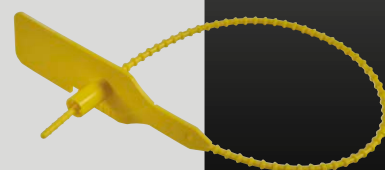
Material shock-resistant nylon 6/6, colour black, UL 94HB, for use in temperatures between -40°C and +80°C, extremely high flexibility in cold environments



Art. no.	length	width	PU
263100	199	4,6	100
263102	288	4,6	100
263104	302	4,6	100
263106	371	4,6	100
263108	290	7,5	100
263110	370	7,5	100
263112	774	8,7	100

HUPsecure cable ties

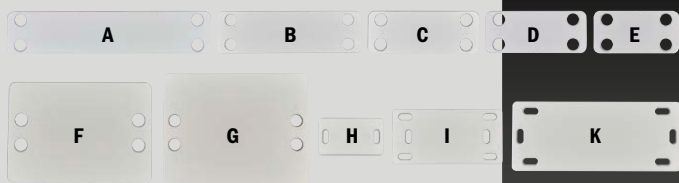
Material PP, colour: yellow, can be used as a seal / connector



Art. no.	length	width	PU
263200	245	3,6	100
263204	295	3,6	100
263208	397	3,6	100

Identification label for cable ties / marking cables

Material PE, for marking cables, pipes and lines, low weight, permanent labelling



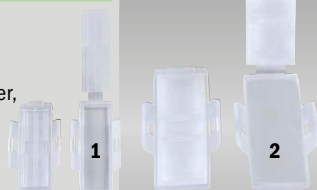
Art. no.	length	width	height	PU	
262179	26	15,2	0,8	100	H
262180	42,2	21,2	1,0	100	I
262181	60,8	25,2	1,2	100	K
262182	60,0	50,0	1,0	100	G
262183	38,5	19,1	0,4	100	E
262184	45,3	19,1	0,4	100	D
262185	50,5	19,1	0,4	100	C
262186	65,0	19,1	0,4	100	B
262187	63,8	44,8	0,4	100	F
262188	90,0	19,1	0,4	100	A
262189	160,0	80,0	0,6	100	L



Labelling box

Material PE, for attaching using cable ties (widths up to 4.8mm)

Instructions: Open box, insert labelled paper, snap box shut and attach using cable ties

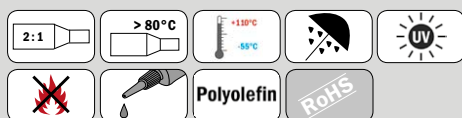


Art. no.	length	width	height	PU	
262190	11,5	32,6	3,0	100	1
262191	19,1	43,5	4,6	100	2



Heat-shrinkable end caps

- Designed with a layer of spiral coated hot melt adhesive in the internal surface of the end cap.
- Provides highly resistant to moisture, fungus, and corrosion.
- Recommended for use both in open air and on underground power distribution cables with PVC, lead or XLPE sheaths.
- Shrinkable Ratio: 2:1.
- Electrical insulation to 1000V.
- Easy installation over the cable end.
- Abrasion resistance and mechanical protection.



Art. no.	Cable-Ø	cable length	wall thickness	PU
267500	4 - 10	15	2,6	100
267502	6 - 16	25	2,8	50
267506	18 - 32	40	3,3	25
267508	28 - 48	50	3,5	10
267510	45 - 68	55	4,0	10
267512	55 - 90	70	4,0	25
267514	65 - 110	70	4,0	20



"Slim" 1000 V screwdriver with PZ slot profile



with 2 component handle made from PP/TPE material, blade made from molybdenum vanadium steel, hardened, blasted, routine checked, insulated

Screwdriver with reduced blade diameter and integrated protective insulation. Deep screwing can be achieved to a better standard thanks to the reduced blade diameter.

Area of application for PZ/FL profile

The screws are mainly used in electrical installation in automatic circuit breakers and safety switches



Art. no. 102870
Slim: 5,0 x 80, size 1

Art. no. 102872
Slim: 6,0 x 100, size 2



"Slim" 1000 V screwdriver set with PZ slot profile head



with 2 component handle made from PP/TPE material, blade made from molybdenum vanadium steel, hardened, blasted, routine checked, insulated

Screwdriver with reduced blade diameter and integrated protective insulation. Deep screwing can be achieved to a better standard thanks to the reduced blade diameter.



Art. no. 102879
Set Slim: 2-piece



"Slim" 1000 V screwdriver



with 2 component handle made from PP/TPE material, blade made from molybdenum vanadium steel, hardened, blasted, routine checked, insulated

Screwdriver with reduced blade diameter and integrated protective insulation. Deep screwing can be achieved to a better standard thanks to the reduced blade diameter.

Art. no.	form	CW x BL	KSt	PU	
102914	Slot	3,5 x 100	0,6	1	+
102916	Slot	4 x 100	0,8	1	+
102917	Slot	4 x 100	1,0	1	+
102918	Slot	5,5 x 125	1,0	1	+
102920	Slot	6,5 x 150	1,2	1	+
102942	Phillips	1		1	+
102944	Phillips	2		1	+
102952	Pozidriv	1		1	+
102954	Pozidriv	2		1	+



haupa®

... convincing solutions

"Slim" 1000 V screwdriver set



with 2 component handle made from PP/TPE material, blade made from molybdenum vanadium steel, hardened, blasted, routine checked, insulated, 6-piece.

Contents: 1 Slim flat head screwdriver in 3.5 x 100 mm, 4 x 100 mm, 5.5 x 125 mm and 6.5 x 150 mm, Slim Phillips or Pozidriv screwdrivers in sizes 1 and 2



1000 V IEC 60900:2012

Art. no. 102999

Slim: Slot / Phillips

Art. no. 102999/PZ

Slim: Slot / Pozidriv



"Flex" hinged ratchet combination wrench set

Hinged ratchet combination wrench set made of chrome vanadium steel, chromium plated surface, polished, fine-toothed, 72 teeth, with hinge, 180° swivelling head, DIN 3113, ISO 3318, in a practical plastic box with metal catch.

Contents:

Wrench sizes 8 - 9 - 10 - 12 - 13 - 14 - 17 - 19 mm



Art. no. 110902

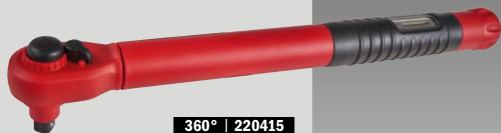
8-pcs, WS: 8 - 19 mm



Torque wrench 1000 V

TQ

5 - 50 Nm, full insulated, from shock-resistant plastic, with built-in reversible ratchet, right and left-handed rotation with collet



1000 V IEC 60900:2012



Art. no. 220415

VDE 3/8"



3/8" internal hexagonal bolt set

7-piece, in roll-up case with loop for hanging up, **extra long 150 mm**, with ball end for challenging installation positions

Sizes: 3 - 4 - 5 - 6 - 7 - 8 - 10



Art. no. 111737

Set: 7-pcs, 3/8"



Bit box, 46-piece

Robust black plastic box, premium quality secure and special S2 bit set! **1/4" = 25 mm bits**

Contents:

- 1 compact reversible ratchet 1/4"
- 11 socket wrench inserts 4 - 12 1/4"
- 1 short extension 1/4"
- 1 1/4" adapter for bits
- 1 1/4" extension for use as a T-handle
- 1 adapter with 1/4" bit collet for all driver type
- 5 bits PH 0, 1, 2, 2, 3
- 5 bits PZ 0, 1, 2, 2, 3
- 5 bits Slot 3, 3.5, 4.5, 5.5, 6.5
- 4 bits Internal hexagonal bolt 3, 4, 5, 6
- 11 bits Tx 6, 7, 8, 9, 10, 15, 20, 25, 27, 30, 40



Art. no. 102214

46-pcs, bits: 25 mm



"SocketFlex" socket wrench box

Chrome vanadium steel, industrial quality, black plastic case with metal catch.

Contents:

- 12 1/4" socket wrench inserts 4 - 4.5 - 5 - 5.5 - 6 - 7 - 8 - 9 - 10 - 11 - 12 - 13 mm
- 2 1/4" 50 and 150 mm extensions
- 1 3/8" x 1/4" adapter for extending for use as a T-handle
- 1 1/4" universal joint
- 1 bit adapter 4-edge to 1/4" hexagonal
- 1 1/4" reversible wratchet
- 13 1/2" socket wrench inserts 10 - 11 - 12 - 13 - 14 - 15 - 17 - 19 - 22 - 24 - 27 - 30 - 32
- 2 1/2" 75 and 250 mm extensions
- 1 3/8" x 1/2" adapter for extending for use as a T-handle
- 1 1/2" universal joint
- 1 1/2" reversible ratchet
- 1 Flex ratchet screwdriver
- 1 adapter 1/4" x 1/4" x 50 mm
- 1 adapter 1/4" x 1/4" x 80 mm
- 4 bits 1/4", 50 mm, PH 0 - 1 - 2 - 3
- 4 bits 1/4", 50 mm, PZ 0 - 1 - 2 - 3
- 2 bits 1/4", 50 mm, PZ/FL 1 - 2
- 4 bits 1/4", 50 mm, slot 3 - 4 - 5 - 6 mm
- 6 bits 1/4", 50 mm, hexagon socket 2 - 2.5 - 3 - 4 - 5 - 6

Art. no. 110672

Set: 59-piece



Bit-Box, 50 mm, 7-piece

50 mm 1/4" bits in plastic box

Contents:

- 1 bit PH 1, 2
- 1 bit PZ 1, 2
- 1 bit PZ/FL 1, 2
- 1 bit Slot 4



Art. no. 102216

7-pcs, bits: 50 mm

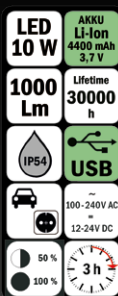


Compact floodlight „HUPlight10pro“

- Integrated Li-Ion 3.7V / 4.4Ah battery
- **10 watt LED**
- High-quality and solid housing made of diecast aluminium, with plastic edge protector
- For use inside and out, splashproof according to IP54
- Extremely bright illumination, 6500K colour temperature
- 1000 Lm luminosity
- Variable light output, 50% | 100%
- Operating time: - Approx. 3 hours with 100% light output - approx. 6 hours with 50% light output
- Approx. 4.75 hours charging time using power unit supplied
- Can be used to charge external devices via USB (power bank function)
- Charger: 100 – 240 V AC plug-in power supply (5 V/1A DC)
- 12V KFZ charging cable
- Adjustable stand

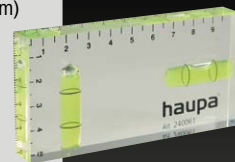


Art. no. 130344
D: 170 x 121 x 43 mm



“HUPmini” spirit level

Made of perspex, with 2 levels (horizontal and vertical), with 2 measurement scales (0 – 10 cm and 0 – 5 cm)



Art. no. 240061
D: 100 x 50 x 15 mm

Push-through expansion dowel

Suitability

- For all concrete and masonry building materials, with limitations for cavity building materials
- For fixing all items which can be attached using wood and chipboard screws

Features

- Three-way split of the expansion part for guiding screws perfectly and centrally
- Quicker installation and higher extraction value
- Support and rotating construction wedges ensure good anti-twist protection
- Optimum expansion behaviour in both solid and softer materials and in hollow and perforated bricks
- Passage opening in the dowel tip makes screwing easier



Art. no.	Ø x length	screw-Ø	depth	PU
794002	6 x 30	3,5 – 5,0	40	100
794004	8 x 40	4,5 – 6,0	50	100

Expansion dowel sleeve

Suitability

- For all concrete and masonry building materials, with limitations for cavity building materials
- For fixing all items which can be attached using wood and chipboard screws

Features

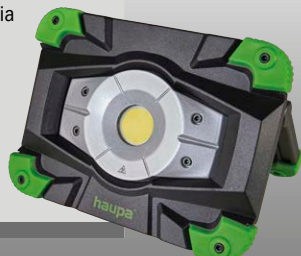
- Three-way split of the expansion part for guiding screws perfectly and centrally
- Quicker installation and higher extraction value
- Support and rotating wedges ensure good anti-twist protection
- Optimum expansion behaviour in both solid and softer materials and in hollow and perforated bricks
- Passage opening in the dowel tip makes screwing easier
- with additional collar



Art. no.	Ø x length	screw-Ø	depth	PU
794012	5 x 25	2,5 – 4,0	35	100
794014	6 x 30	3,5 – 5,0	40	100
794016	8 x 40	4,5 – 6,0	50	50
794018	10 x 50	6,0 – 8,0	60	25

Compact floodlight „HUPlight20pro“

- Integrated Li-Ion 7.4V / 4.4Ah battery
- **20 watt LED**
- High-quality and solid housing made of diecast aluminium, with plastic edge protector
- For use inside and out, splashproof according to IP54
- Extremely bright illumination, 6500K colour temperature
- 2000 Lm luminosity
- Variable light output, 50% | 100%
- Operating time: - Approx. 3 hours with 100% light output - approx. 6 hours with 50% light output
- 5 hours charging time using power unit supplied
- Can be used to charge external devices via USB (power bank function)
- Charger: 100 – 240 V AC plug-in power supply (12 V/1A DC)
- 12V KFZ charging cable
- Adjustable stand



Art. no. 130346
D: 185 x 135 x 43 mm



LED working light „HUPlight10+3“

- Integrated Li-Ion 3.7V / 6.7Ah battery
- **10 watt + 3 watt LED**
- High-quality plastic housing
- For use inside and out, splashproof according to IP54
- Extremely bright illumination, 7000K colour temperature
- 220 Lm (3W LED) + 1000 Lm (10W LED) luminosity
- Variable light output, 50% | 100%
- Operating time
 - 10W LED: - Approx. 3 hours with 100% light output - Approx. 6 hours with 50% light output
 - 3W LED: - Approx. 12 hours with 100% light output - Approx. 24 hours with 50% light output
- 3.5 hours charging time using power unit supplied
- Charger: 100 – 240 V AC plug-in power supply (5V/2A DC)
- 12V KFZ charging cable
- Adjustable magnetic stand
- With hook for hanging
- With belt clip



Art. no. 130348
D: 220 x 57 x 40 mm



haupa

... convincing solutions

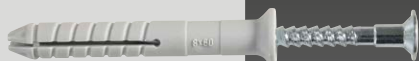
Countersunk nail dowel

Suitability

- For concrete, solid brick, with limitations for aerated concrete and hollow concrete blocks

Features

- Time-saving fixing system consisting of one expansion dowel and one expansion nail
- Pre-assembled system: The expansion nail fixes firmly into the dowel.
- Hammer-in stop prevents premature expansion
- The dowel and fixed item can be removed by simply unscrewing the expansion nail from the dowel



Art. no.	Ø x length	screw	strength	PU	
794020	5 x 30	PZ	5	100	+
794022	5 x 50	PZ	25	100	+
794024	6 x 40	PZ	10	50	+
794026	6 x 60	PZ	30	50	+
794028	6 x 80	PZ	50	50	+
794030	8 x 60	PZ	20	50	+

Aerated concrete dowel with setting tool

Suitability

- For porous concrete (aerated concrete)

Features

- Time-saving fixing system
- Cutting into the building material guarantees expansion-free anchoring
- Use in electrical operations thanks to non-conductive plastic
- Solid edge prevents slide-in in the drilled hole and ensures exact screw depth
- Includes reusable setting tool



Art. no.	Ø x length	screw-Ø	depth	PU
794040	10 x 50	4,0 - 6,0	60	50

Universal metal dowel

Suitability

- Concrete, solid brick, porous concrete, limitations for perforated bricks and hollow concrete blocks

Features

- Perfect screw guidance thanks to ribbed internal geometry
- Fire-proof pipe fixing according to technical guidelines for gas pipe installation (TRGI 3.3.7.2.)
- Dowel can be driven into porous concrete G2 and G4 without pre-drilling.



Art. no.	Ø x length	screw-Ø	depth	PU
794050	6 x 32	5,0 - 6,0	40	200
794052	8 x 60	6,0 - 8,0	70	100

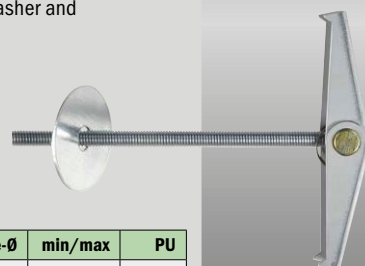
Spring toggle

Suitability

- Plasterboard and gypsum fibreboard, chipboard, fibre cement board, cavity brick covers, hollow body covers

Features

- Special metal cavity anchor
- The side opens in any position in the hole using a spring mechanism
- Long threaded rod for a larger wall thickness
- Execution: Threaded rod with washer and hexagonal nut



Art. no.	Ø x length	bore hole-Ø	min/max	PU
794060	4 x 100	14	35/80	25
794062	5 x 100	16	45/80	20

Plasterboard dowel with setting tool

Suitability

- Plasterboard, limitations for full plasterboard and porous concrete

Features

- Time-saving fixing system with dowel and setting tool
- Perfect insertion thanks to streamlined dowel tip
- Cutting into the building material guarantees optimum anchoring
- Use in electrical operations thanks to non-conductive plastic
- Includes reusable setting tool



Art. no.	length	screw-Ø	depth	PU
794070	24	4,0 - 6,0	35/80	50

SysCon transport system

For simple and flexible transportation of HAUPA ABS SysCon plastic boxes

- SysCon lockable thanks to lateral snap latches on the transport system
- Metal plate with 4 castors, 2 lockable
- Max. load: 200 kg



Art. no. 220653

D: 470 x 240 x 105 mm

SysCon

Installation case "Extreme"

Unloaded tool trolley, developed specifically for professionals for transporting a variety of hand tools, power tools and spare parts, making it the perfect companion. In a robust injection-moulded copolymer polypropylene case that can withstand shocks, rough use and extreme weather conditions, with two side handles, one extendible trolley handle (up to 990mm long) and four sturdy and low-noise wheels. The upper compartment, sealed under the top lid, contains a removable tray for spare hand tools which are arranged in a deeper section, where, for example, a laptop could be stored. The lower compartment, protected by a foldable front door, can hold 3 to 8 removable drawers of variable heights (30-60-95mm), with a variety of optional inner configurations, such as, for example, bicolour foam layers, trays for small items and even specially developed tool palettes for all types of small and large hand tools. All drawers can be opened fully and are self-locking to prevent items accidentally falling out. A central key lock and metal reinforced padlock ensure that all compartments are fully secured using a single key.

- 2 carry handles on the sides
- Telescopic handle for trolley function
- 4 robust and low-noise wheels
- Drawer system on the front
- Removable tray in the upper compartment
- Central lock with key
- Space for labels to mark contents
- 2 robust cover fastenings
- 2 robust locks for the front flap
- Fully configurable drawers
- Stackable



Art. no. 220311

D: 581 x 455 x 381 mm

360° | 220311



Tool case trolley "Extreme"

Empty, waterproof and perfectly sealed thanks to the embedded neoprene O rings and pressure relief valve, this case provides absolute protection for your tools. Manufactured from durable, light polypropylene, it is equipped with tough locks and an ergonomic handle. These are ideal for use in harsher environments, e.g. in the industrial, aviation, military and marine sectors.

- Waterproof polypropylene case
- Waterproof and airtight according to IP 67
- Airworthy
- Extendible handle for trolley function
- Stackable
- Corrosion-resistant, sand and dust-tight
- Corrosion-resistant metal hinge
- Shock and crushproof
- For use in temperatures between -33°C and +90°C
- Ergonomic and rubberised handle
- Sturdy and user-friendly locks
- Manual pressure relief valve
- Embedded O ring seal in the lid



Art. no. 220299

D: 517 x 277 x 217 mm

360° | 220299



7,50 kg

Tool holder for construction buckets

Tool bag for hanging up/covering in a commercially available 10L bucket, 30 exterior pockets/compartments, 14 inner pockets/compartments, 1 hammer loop, 1 loop with carabiner, stain-resistant, double cross-seam stitching for high load capacity, material: extra strong 1680D polyester, colour: black, green.

Supplied without buckets!

360° | 220313



Art. no. 220313

D: 460 x 280 x 40 mm



14,1 kg

haupa®

... convincing solutions

light+building

18. – 23. 3. 2018 Frankfurt am Main

Visit us at our stand!

We look forward to seeing you.

Hall 8.0, Stand G30

Catalogue



homepage



You Tube
HAUPA demo



QR-Codes:

This catalogue contains QR codes which ensure more transparent communication of additional information via video or similar media content.

Germany

HAUPA GmbH & Co. KG

Königstraße 165-169

42853 Remscheid

Phone: +49 (0)2191 8418-0

Fax: +49 (0)2191 8418840

E-Mail: sales@haupa.com

www.haupa.com



HAUPA-Group
www.haupa.com

Your electric wholesaler:

Company stamp